

# Ohio County Profiles

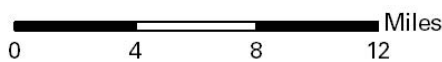
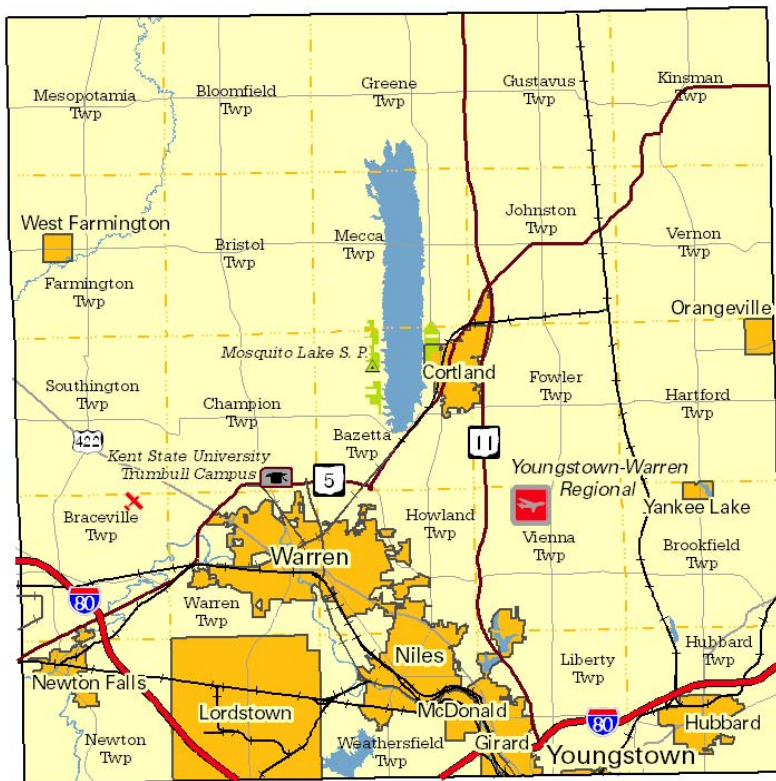


Department of  
Development

Prepared by the Office of Policy, Research and Strategic Planning

## Trumbull County

**Established:** Proclamation - July 10, 1800  
**2010 Population:** 210,312  
**Land Area:** 615.8 square miles  
**County Seat:** Warren City  
**Named for:** Jonathan Trumbull, Connecticut Governor



### Taxes

Taxable value of real property	\$3,306,888,960
Residential	\$2,424,269,740
Agriculture	\$244,169,570
Industrial	\$147,508,730
Commercial	\$482,516,460
Mineral	\$8,424,460
Ohio income tax liability	\$112,049,675
Average per return	\$1,141.51

### Land Use/Land Cover

	Percent
Urban (Residential/Commercial/Industrial/Transportation and Urban Grasses)	16.47%
Cropland	28.43%
Pasture	3.40%
Forest	42.26%
Open Water	2.72%
Wetlands (Wooded/Herbaceous)	6.64%
Bare/Mines	0.09%

### Largest Places

	Census 2010	Census 2000
Warren city	41,557	46,832
Niles city	19,266	20,932
Girard city	9,958	10,902
Hubbard city	7,874	8,284
Cortland city	7,104	6,830
Newton Falls city	4,795	5,002
Lordstown village	3,417	3,633
McDonald village	3,263	3,481
West Farmington village	499	519
Orangeville village	197	189

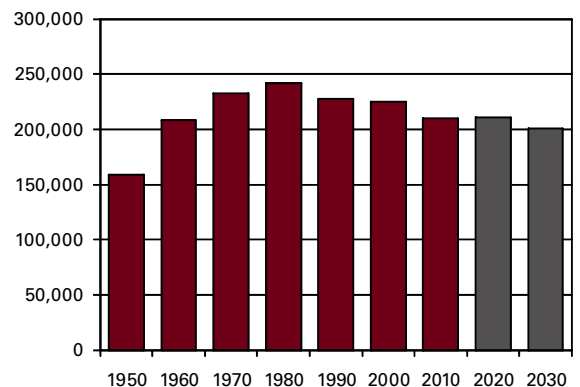
### Total Population

#### Census

1800	1,302	1880	44,880	1950	158,915
1810	8,671	1890	42,373	1960	208,526
1820	15,546	1900	46,591	1970	232,579
1830	26,153	1910	52,766	1980	241,863
1840	38,107	1920	83,920	1990	227,813
1850	30,490	1930	123,063	2000	225,116
1860	30,656	1940	132,315	2010	210,312
1870	38,659				

#### Projected

2020	211,100
2030	200,990



## Population by Race

	Number	Percent
ACS Total Population	213,350	100.0%
White	191,257	89.6%
African-American	17,423	8.2%
Native American	401	0.2%
Asian	987	0.5%
Pacific Islander	0	0.0%
Other	405	0.2%
Two or More Races	2,877	1.3%
Hispanic (may be of any race)	2,206	1.0%
<b>Total Minority</b>	<b>23,420</b>	<b>11.0%</b>

## Educational Attainment

	Number	Percent
Persons 25 years and over	148,283	100.0%
No high school diploma	20,850	14.1%
High school graduate	67,773	45.7%
Some college, no degree	27,585	18.6%
Associate degree	8,588	5.8%
Bachelor's degree	16,046	10.8%
Master's degree or higher	7,441	5.0%

## Family Type by Employment Status

	Number	Percent
Total Families	57,568	100.0%
Married couple, husband and wife in labor force	19,199	33.4%
Married couple, husband in labor force, wife not	8,718	15.1%
Married couple, wife in labor force, husband not	3,839	6.7%
Married couple, husband and wife not in labor force	10,069	17.5%
Male householder, in labor force	2,709	4.7%
Male householder, not in labor force	1,189	2.1%
Female householder, in labor force	7,473	13.0%
Female householder, not in labor force	4,372	7.6%

## Household Income

	Number	Percent
Total Households	87,790	100.0%
Less than \$10,000	7,323	8.3%
\$10,000 to \$19,999	12,177	13.9%
\$20,000 to \$29,999	11,162	12.7%
\$30,000 to \$39,999	10,612	12.1%
\$40,000 to \$49,999	9,738	11.1%
\$50,000 to \$59,999	7,709	8.8%
\$60,000 to \$74,999	9,979	11.4%
\$75,000 to \$99,999	9,873	11.2%
\$100,000 to \$149,999	6,914	7.9%
\$150,000 to \$199,999	1,366	1.6%
\$200,000 or more	937	1.1%
<b>Median household income</b>	<b>\$42,407</b>	

Percentages may not sum to 100% due to rounding.

## Population by Age

	Number	Percent
ACS Total Population	213,350	100.0%
Under 5 years	11,947	5.6%
5 to 17 years	36,047	16.9%
18 to 24 years	17,073	8.0%
25 to 44 years	51,218	24.0%
45 to 64 years	61,535	28.8%
65 years and more	35,530	16.7%
<b>Median Age</b>	<b>41.8</b>	

## Family Type by Presence of Own Children Under 18

	Number	Percent
Total Families	57,568	100.0%
Married-couple families with own children	14,360	24.9%
Male householder, no wife present, with own children	1,686	2.9%
Female householder, no husband present, with own children	6,663	11.6%
Families with no own children	34,859	60.6%

## Poverty Status of Families By Family Type by Presence Of Related Children

	Number	Percent
Total Families	57,568	100.0%
Family income above poverty level	51,432	89.3%
Family income below poverty level	6,136	10.7%
Married couple, with related children	892	14.5%
Male householder, no wife present, with related children	570	9.3%
Female householder, no husband present, with related children	3,259	53.1%
Families with no related children	1,415	23.1%

## Ratio of Income To Poverty Level

	Number	Percent
Population for whom poverty status is determined	208,851	100.0%
Below 50% of poverty level	13,978	6.7%
50% to 99% of poverty level	15,344	7.3%
100% to 149% of poverty level	18,868	9.0%
150% to 199% of poverty level	22,774	10.9%
200% of poverty level or more	137,887	66.0%

## Geographical Mobility

	Number	Percent
Population aged 1 year and older	211,105	100.0%
Same house as previous year	190,583	90.3%
Different house, same county	14,892	7.1%
Different county, same state	3,466	1.6%
Different state	2,078	1.0%
Abroad	86	0.0%

## Travel Time To Work

	Number	Percent
Workers 16 years and over	87,481	100.0%
Less than 15 minutes	30,251	34.6%
15 to 29 minutes	35,084	40.1%
30 to 44 minutes	12,272	14.0%
45 to 59 minutes	4,413	5.0%
60 minutes or more	5,461	6.2%

Mean travel time **22.4 minutes**

## Housing Units

	Number	Percent
Total housing units	97,093	100.0%
Occupied housing units	87,790	90.4%
Owner occupied	65,337	74.4%
Renter occupied	22,453	25.6%
Vacant housing units	9,303	9.6%

## Year Structure Built

	Number	Percent
Total housing units	97,093	100.0%
Built 2005 or later	821	0.8%
Built 2000 to 2004	3,522	3.6%
Built 1990 to 1999	8,432	8.7%
Built 1980 to 1989	6,792	7.0%
Built 1970 to 1979	16,298	16.8%
Built 1960 to 1969	14,605	15.0%
Built 1950 to 1959	18,236	18.8%
Built 1940 to 1949	8,610	8.9%
Built 1939 or earlier	19,777	20.4%

Median year built **1961**

## Value for Specified Owner-Occupied Housing Units

	Number	Percent
Specified owner-occupied housing units	65,337	100.0%
Less than \$20,000	3,195	4.9%
\$20,000 to \$39,999	3,237	5.0%
\$40,000 to \$59,999	4,870	7.5%
\$60,000 to \$79,999	8,784	13.4%
\$80,000 to \$99,999	11,821	18.1%
\$100,000 to \$124,999	9,558	14.6%
\$125,000 to \$149,999	7,169	11.0%
\$150,000 to \$199,999	9,080	13.9%
\$200,000 to \$299,999	5,254	8.0%
\$300,000 to \$499,999	1,696	2.6%
\$500,000 to \$999,999	495	0.8%
\$1,000,000 or more	178	0.3%

Median value **\$102,000**

## House Heating Fuel

	Number	Percent
Occupied housing units	87,790	100.0%
Utility gas	71,097	81.0%
Bottled, tank or LP gas	2,149	2.4%
Electricity	7,814	8.9%
Fuel oil, kerosene, etc	3,669	4.2%
Coal, coke or wood	2,206	2.5%
Solar energy or other fuel	625	0.7%
No fuel used	230	0.3%

Percentages may not sum to 100% due to rounding.

## Gross Rent

	Number	Percent
Specified renter-occupied housing units	22,453	100.0%
Less than \$100	324	1.4%
\$100 to \$199	1,016	4.5%
\$200 to \$299	875	3.9%
\$300 to \$399	1,319	5.9%
\$400 to \$499	3,065	13.7%
\$500 to \$599	4,816	21.4%
\$600 to \$699	3,231	14.4%
\$700 to \$799	2,232	9.9%
\$800 to \$899	1,848	8.2%
\$900 to \$999	940	4.2%
\$1,000 to \$1,499	912	4.1%
\$1,500 or more	314	1.4%
No cash rent	1,561	7.0%

Median gross rent **\$578**

Median gross rent as a percentage of household income **28.7**

## Selected Monthly Owner Costs for Specified Owner-Occupied Housing Units

	Number	Percent
Specified owner-occupied housing units with a mortgage	39,923	100.0%
Less than \$400	593	1.5%
\$400 to \$599	3,055	7.7%
\$600 to \$799	5,662	14.2%
\$800 to \$999	8,074	20.2%
\$1,000 to \$1,249	8,675	21.7%
\$1,250 to \$1,499	5,664	14.2%
\$1,500 to \$1,999	5,149	12.9%
\$2,000 to \$2,999	2,561	6.4%
\$3,000 or more	490	1.2%

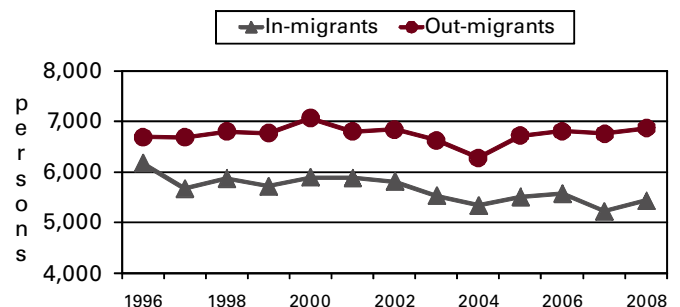
Median monthly owners cost **\$1,074**

Median monthly owners cost as a percentage of household income **22.9**

## Vital Statistics

	Number	Rate
Births / rate per 1,000 women aged 15 to 44	2,351	61.8
Teen births / rate per 1,000 females 15-19	270	40.6
Deaths / rate per 100,000 population	2,439	1,142.5
Marriages / rate per 1,000 population	1,181	5.4
Divorces / rate per 1,000 population	785	3.6

## Migration



## Agriculture

Land in farms (acres)	126,000
Number of farms	960
Average size (acres)	131
Total cash receipts	\$57,653,000
Per farm	\$60,055

## Education

Public schools	76
Students (Average Daily Membership)	32,929
Expenditures per student	\$9,398
Student-teacher ratio	18.6
Graduation rate	83.3
Teachers (Full Time Equivalent)	1,970.7
Non-public schools	11
Students	1,773
4-year public universities	0
Branches	1
2-year public colleges	0
Private universities and colleges	0
Public libraries (Main / Branches)	7 / 6

## Transportation

Registered motor vehicles	239,551
Passenger cars	159,069
Noncommercial trucks	34,612
Total license revenue	\$6,234,099.87
Interstate highway miles	23.02
Turnpike miles	10.69
U.S. highway miles	32.14
State highway miles	303.20
County, township, and municipal road miles	1,567.29
Commercial airports	2

## Voting

Number of precincts	238
Number of registered voters	149,685
Voted in 2010 election	74,386
Percent turnout	49.7%

## Health Care

Physicians (MDs & DOs)	360
Registered hospitals	2
Number of beds	559
Licensed nursing homes	20
Number of beds	1,856
Licensed residential care	10
Number of beds	660
Adults with employer-based insurance	59.0%
Children with employer-based insurance	50.5%

## State Parks, Forests, Nature Preserves, And Wildlife Areas

Areas/Facilities	4
Acreage	14,776.71

## Communications

Television stations	0
Radio stations	2
Daily newspapers	1
Circulation	44,500

## Crime

Total crimes reported in Uniform Crime Report	7,283
-----------------------------------------------	-------

## Finance

FDIC insured financial institutions (HQs)	3
Assets (000)	\$3,737,327
Branch offices	64
Institutions represented	14

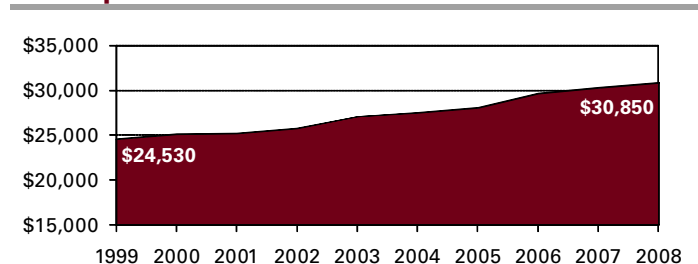
## Transfer Payments

Total transfer payments	\$1,664,813,000
Payments to individuals	\$1,629,113,000
Retirement and disability	\$654,765,000
Medical payments	\$727,028,000
Income maintenance (Supplemental SSI, family assistance, food stamps, etc)	\$126,162,000
Unemployment benefits	\$39,507,000
Veterans benefits	\$26,760,000
Federal education and training assistance	\$34,076,000
Other payments to individuals	\$20,815,000
Total personal income	\$6,514,265,000
Dependency ratio	25.6%

## Federal Expenditures

Direct expenditures or obligations	\$1,474,265,918
Retirement and disability	\$721,969,528
Other direct payments	\$482,200,928
Grant awards	\$202,963,792
Highway planning and construction	\$12,535,034
Temporary assistance to needy families	\$14,434,536
Medical assistance program	\$120,092,597
Procurement contract awards	\$27,233,017
Dept. of Defense	\$19,389,825
Salary and wages	\$39,898,653
Dept. of Defense	\$2,185,000
Other federal assistance	\$203,373,921
Direct loans	\$3,056,729
Guaranteed loans	\$92,607,461
Insurance	\$107,709,731

## Per Capita Personal Income



**Civilian Labor Force**

	2005	2006	2007	2008	2009
Civilian labor force	105,300	105,800	106,000	105,700	107,200
Employed	98,200	99,300	99,400	97,800	92,500
Unemployed	7,100	6,500	6,600	7,900	14,700
Unemployment rate	6.7	6.2	6.2	7.5	13.8

**Establishments, Employment, and Wages by Sector: 2008**

Industrial Sector	Number of Establishments	Average Employment	Total Wages	Average Weekly Wage
Private Sector	4,440	66,099	\$2,446,896,069	\$712
Goods-Producing	779	18,440	\$1,131,834,198	\$1,180
Natural Resources and Mining	21	97	\$2,877,312	\$569
Constuction	479	2,710	\$103,000,317	\$731
Manufacturing	279	15,633	\$1,025,956,569	\$1,262
Service-Providing	3,661	47,659	\$1,315,061,871	\$531
Trade, Transportation and Utilities	1,088	15,353	\$440,605,155	\$552
Information	50	676	\$31,808,317	\$904
Financial Services	450	2,841	\$91,924,872	\$622
Professional and Business Services	607	6,438	\$186,870,081	\$558
Education and Health Services	562	12,654	\$439,001,756	\$667
Leisure and Hospitality	500	7,498	\$85,315,258	\$219
Other Services	397	2,190	\$39,288,131	\$345
Federal Government		466	\$24,257,477	\$1,001
State Government		790	\$37,347,502	\$909
Local Government		8,625	\$325,122,302	\$725

Private Sector total includes Unclassified establishments not shown.

**Change Since 2003**

Private Sector	-3.5%	-11.6%	-6.8%	5.3%
Goods-Producing	-11.0%	-27.9%	-23.5%	6.0%
Natural Resources and Mining	-27.6%	-31.2%	-20.6%	15.2%
Construction	-12.3%	-0.1%	21.2%	21.4%
Manufacturing	-7.0%	-31.2%	-26.3%	7.1%
Service-Producing	-1.8%	-3.1%	14.7%	18.5%
Trade, Transportation and Utilities	-4.0%	-9.4%	6.2%	17.2%
Information	11.1%	-48.1%	-13.4%	66.8%
Financial Services	1.1%	-12.2%	-10.0%	2.5%
Professional and Business Services	-2.9%	-1.0%	15.8%	17.0%
Education and Health Services	2.6%	12.6%	38.2%	22.8%
Leisure and Hospitality	2.2%	-1.1%	12.4%	13.5%
Other Services	-8.1%	-7.2%	5.0%	13.1%
Federal Government		-6.0%	2.9%	9.5%
State Government		-9.2%	0.3%	10.3%
Local Government		-10.3%	7.3%	19.4%

**Business Numbers**

	2004	2005	2006	2007	2008
Business starts	328	328	407	294	311
Active businesses	3,733	3,724	3,705	3,517	3,444

**Major Employers**

Delphi Corp	Mfg
Forum Health	Serv
General Motors Corp	Mfg
Giant Eagle Inc	Trade
HM Health Services	Serv
Sears Holdings/Kmart Corp	Trade
Severstal Warren Inc	Mfg
Trumbull County Government	Govt
Warren City Schools	Govt
West Corp	Serv

**Residential Construction**

	2005	2006	2007	2008	2009
Total units	449	304	320	231	60
Total valuation (000)	\$63,635	\$49,419	\$43,269	\$25,909	\$8,711
Total single-unit bldgs	350	242	152	83	46
Average cost per unit	\$158,531	\$176,978	\$182,095	\$183,118	\$166,764
Total multi-unit bldg units	99	62	168	148	14
Average cost per unit	\$82,310	\$106,290	\$92,798	\$72,367	\$74,286