

# Ohio County Profiles

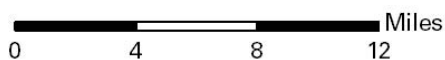
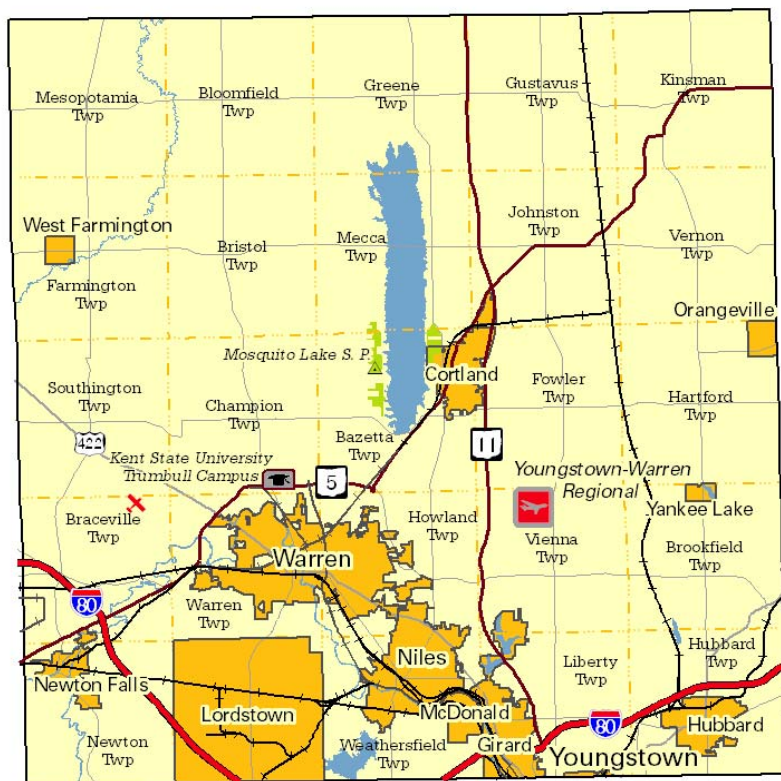


Department of  
Development

Prepared by the Office of Policy, Research and Strategic Planning

## Trumbull County

**Established:** Proclamation - July 10, 1800  
**2007 Population:** 213,475  
**Land Area:** 615.8 square mile  
**County Seat:** Warren City  
**Named for:** Jonathan Trumbull, Connecticut Governor



### Taxes

Taxable value of real property	\$3,267,737,870
Residential	\$2,393,810,170
Agriculture	\$239,212,520
Industrial	\$148,228,720
Commercial	\$476,849,940
Mineral	\$9,636,520
Ohio income tax liability	\$130,551,009
Average per return	\$1,312.85

### Land Use/Land Cover

	Percent
Urban (Residential/Commercial/Industrial/ Transportation and Urban Grasses)	16.47%
Cropland	28.43%
Pasture	3.40%
Forest	42.26%
Open Water	2.72%
Wetlands (Wooded/Herbaceous)	6.64%
Bare/Mines	0.09%

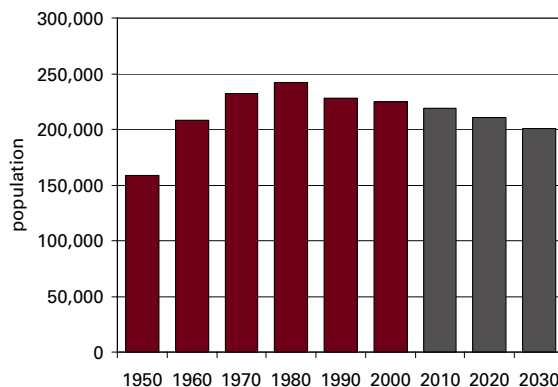
### Largest Areas

	Census 2000	Est. 2007
Warren city	46,832	44,270
Niles city	20,932	19,477
Howland twp UB	17,546	16,552
Liberty twp UB	12,661	11,967
Girard city	10,902	10,182
Brookfield twp UB	9,921	9,437
Champion twp	9,762	9,292
Weathersfield twp UB	8,677	8,252
Hubbard city	8,284	7,776
Cortland city	6,830	6,429

UB: Unincorporated Balance

### Total Population

Census		Estimated	
1800	1,302	1900	46,591
1810	8,671	1910	52,766
1820	15,546	1920	83,920
1830	26,153	1930	123,063
1840	38,107	1940	132,315
1850	30,490	1950	158,915
1860	30,656	1960	208,526
1870	38,659	1970	232,579
1880	44,880	1980	241,863
1890	42,373	1990	227,813
		2000	225,116
		2001	223,926
		2002	222,318
		2003	220,483
		2004	219,041
		2005	217,286
		2006	215,432
		2007	213,475
		<b>Projected</b>	
		2010	218,730
		2020	211,100
		2030	200,990



Population by Race	Number	Percent
Total Population	225,116	100.0%
White	202,896	90.1%
African-American	17,198	7.6%
Native American	484	0.2%
Asian	1,009	0.4%
Pacific Islander	63	0.0%
Other	556	0.2%
Two or More Races	2,910	1.3%
Hispanic (may be of any race)	1,762	0.8%
<b>Total Minority</b>	<b>23,318</b>	<b>10.4%</b>

Educational Attainment	Number	Percent
Persons 25 years and over	153,044	100.0%
No high school diploma	26,794	17.5%
High school graduate	67,818	44.3%
Some college, no degree	28,413	18.6%
Associate degree	7,887	5.2%
Bachelor's degree	15,329	10.0%
Master's degree or higher	6,803	4.4%

Family Type by Employment Status	Number	Percent
Total Families	61,975	100.0%
Married couple, husband and wife in labor force	22,827	36.8%
Married couple, husband in labor force, wife not	10,702	17.3%
Married couple, wife in labor force, husband not	3,326	5.4%
Married couple, husband and wife not in labor force	10,935	17.6%
Male householder, in labor force	2,527	4.1%
Male householder, not in labor force	803	1.3%
Female householder, in labor force	7,233	11.7%
Female householder, not in labor force	3,622	5.8%

Household Income in 1999	Number	Percent
Total Households	88,981	100.0%
Less than \$10,000	8,199	9.2%
\$10,000 to \$19,999	12,763	14.3%
\$20,000 to \$29,999	12,991	14.6%
\$30,000 to \$39,999	12,412	13.9%
\$40,000 to \$49,999	9,946	11.2%
\$50,000 to \$59,999	8,596	9.7%
\$60,000 to \$74,999	9,292	10.4%
\$75,000 to \$99,999	8,279	9.3%
\$100,000 to \$149,999	4,718	5.3%
\$150,000 to \$199,999	896	1.0%
\$200,000 or more	889	1.0%
<b>Median household income</b>	<b>\$38,298</b>	

Population by Age	Number	Percent
Total Population	225,116	100.0%
Under 6 years	16,889	7.5%
6 to 17 years	37,849	16.8%
18 to 24 years	17,334	7.7%
25 to 44 years	61,865	27.5%
45 to 64 years	55,860	24.8%
65 years and more	35,319	15.7%
<b>Median Age</b>	<b>39.0</b>	

Family Type by Presence of Own Children Under 18	Number	Percent
Total Families	61,975	100.0%
Married-couple families with own children	19,274	31.1%
Male householder, no wife present, with own children	1,575	2.5%
Female householder, no husband present, with own children	6,218	10.0%
Families with no own children	34,908	56.3%

Poverty Status in 1999 of Families By Family Type by Presence Of Related Children	Number	Percent
Total Families	61,975	100.0%
Family income above poverty level	57,066	92.1%
Family income below poverty level	4,909	7.9%
Married couple, with related children	1,057	21.5%
Male householder, no wife present, with related children	297	6.1%
Female householder, no husband present, with related children	2,550	51.9%
Families with no related children	1,005	20.5%

Ratio of Income in 1999 To Poverty Level	Number	Percent
Population for whom poverty status is determined	220,572	100.0%
Below 50% of poverty level	9,919	4.5%
50% to 99% of poverty level	12,869	5.8%
100% to 149% of poverty level	17,545	8.0%
150% to 199% of poverty level	22,099	10.0%
200% of poverty level or more	158,140	71.7%

Residence in 1995	Number	Percent
Population 5 years and over	211,361	100.0%
Same house in 1995	135,514	64.1%
Different house, same county	53,568	25.3%
Different county, same state	12,415	5.9%
Different state	8,913	4.2%
Puerto Rico or U.S. islands	55	0.0%
Foreign country	896	0.4%

## Travel Time To Work

	Number	Percent
Workers 16 years and over	97,485	100.0%
Less than 15 minutes	33,938	34.8%
15 to 29 minutes	41,349	42.4%
30 to 44 minutes	11,685	12.0%
45 to 59 minutes	4,019	4.1%
60 minutes or more	4,540	4.7%
Worked at home	1,954	2.0%

**Mean travel time** 21.0 minutes

## Housing Units

	Number	Percent
Total housing units	95,117	100.0%
Occupied housing units	89,020	93.6%
Owner occupied	66,104	69.5%
Renter occupied	22,916	24.1%
Vacant housing units	6,097	6.4%

## Year Structure Built

	Number	Percent
Total housing units	95,117	100.0%
Built 1995 to March 2000	5,008	5.3%
Built 1990 to 1994	3,347	3.5%
Built 1980 to 1989	6,994	7.4%
Built 1970 to 1979	17,773	18.7%
Built 1960 to 1969	14,793	15.6%
Built 1950 to 1959	17,472	18.4%
Built 1940 to 1949	9,677	10.2%
Built 1939 or earlier	20,053	21.1%

**Median year built** 1960

## Value for Specified Owner-Occupied Housing Units

	Number	Percent
Specified owner-occupied housing units	56,505	100.0%
Less than \$20,000	857	1.5%
\$20,000 to \$39,999	3,731	6.6%
\$40,000 to \$59,999	7,561	13.4%
\$60,000 to \$79,999	12,372	21.9%
\$80,000 to \$99,999	12,268	21.7%
\$100,000 to \$124,999	7,470	13.2%
\$125,000 to \$149,999	5,235	9.3%
\$150,000 to \$199,999	4,520	8.0%
\$200,000 to \$249,999	1,242	2.2%
\$250,000 to \$499,999	1,119	2.0%
\$500,000 to \$999,999	75	0.1%
\$1,000,000 or more	55	0.1%

**Median value** \$85,500

## House Heating Fuel

	Number	Percent
Occupied housing units	89,020	100.0%
Utility gas	72,236	81.1%
Bottled, tank or LP gas	2,388	2.7%
Electricity	7,496	8.4%
Fuel oil, kerosene, etc	4,971	5.6%
Coal, coke or wood	1,092	1.2%
Solar energy or other fuel	625	0.7%
No fuel used	212	0.2%

## Gross Rent

	Number	Percent
Specified renter-occupied housing units	22,588	100.0%
Less than \$100	295	1.3%
\$100 to \$199	1,381	6.1%
\$200 to \$299	1,701	7.5%
\$300 to \$399	3,799	16.8%
\$400 to \$499	5,404	23.9%
\$500 to \$599	4,059	18.0%
\$600 to \$699	2,397	10.6%
\$700 to \$799	1,074	4.8%
\$800 to \$899	420	1.9%
\$900 to \$999	174	0.8%
\$1,000 to \$1,499	275	1.2%
\$1,500 or more	104	0.5%
No cash rent	1,505	6.7%

**Median gross rent** \$461

Median gross rent as a percentage of household income in 1999 23.7

## Selected Monthly Owner Costs for Specified Owner-Occupied Housing Units

	Number	Percent
Specified owner-occupied housing units with a mortgage	34,315	100.0%
Less than \$400	1,556	4.5%
\$400 to \$599	6,636	19.3%
\$600 to \$799	8,968	26.1%
\$800 to \$999	7,159	20.9%
\$1,000 to \$1,249	5,131	15.0%
\$1,250 to \$1,499	2,451	7.1%
\$1,500 to \$1,999	1,685	4.9%
\$2,000 to \$2,999	593	1.7%
\$3,000 or more	136	0.4%

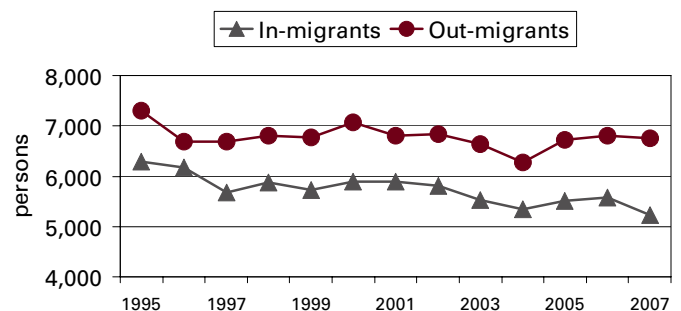
**Median monthly owners cost** \$800

Median monthly owners cost as a percentage of household income 18.9

## Vital Statistics

	Number	Rate
Births / rate per 1,000 women	2,412	60.1
Teen births / rate per 1,000 females 15-17	80	17.5
Deaths / rate per 100,000 population	2,485	1,143.3
Marriages / rate per 1,000 population	1,269	5.8
Divorces / rate per 1,000 population	824	3.8

## Migration



## Agriculture

Land in farms (acres)	122,000
Number of farms	990
Average size (acres)	123
Total cash receipts	\$37,757,000
Per farm	\$37,757

## Education

Public schools	88
Students (Average Daily Membership)	33,251
Expenditures per student	\$8,896
Student-teacher ratio	18.6
Graduation rate	89.7
Teachers (Full Time Equivalent)	1,950.9
Non-public schools	13
Students	1,893
4-year public universities	0
Branches	1
2-year public colleges	0
Private universities and colleges	0
Public libraries (Main / Branches)	7 / 6

## Transportation

Registered motor vehicles	249,450
Passenger cars	167,677
Noncommercial trucks	35,797
Total license revenue	\$6,443,595.64
Interstate highway miles	23.02
Turnpike miles	10.69
U.S. highway miles	32.14
State highway miles	303.20
County, township, and municipal road miles	1,574.58
Commercial airports	2

## Voting

Number of precincts	274
Number of registered voters	142,516
Voted in 2006 election	83,096
Percent turnout	58.3%

## Health Care

Physicians (MDs & DOs)	352
Registered hospitals	2
Number of beds	559
Licensed nursing homes	26
Number of beds	2,734
Licensed residential care	15
Number of beds	852
Adults with employer-based insurance	59.0%
Children with employer-based insurance	50.5%

## State Parks, Forests, Nature Preserves, And Wildlife Areas

Facilities	4
Acreage	14,554.07

## Communications

Television stations	0
Radio stations	0
Daily newspapers	1
Circulation	44,500

## Crime

Total crimes reported in Uniform Crime Report	7,476
---	-------

## Finance

FDIC insured financial institutions (HQs)	3
Assets	\$3,870,217
Branch offices	63
Institutions represented	12

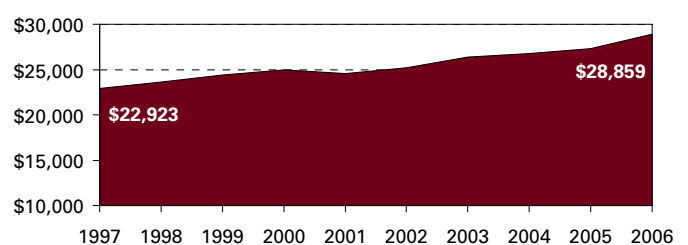
## Transfer Payments

Total transfer payments	\$1,457,140,000
Payments to individuals	\$1,398,878,000
Retirement and disability	\$601,209,000
Medical payments	\$630,203,000
Income maintenance (Supplemental SSI, family assistance, food stamps, etc)	\$114,921,000
Unemployment benefits	\$24,028,000
Veterans benefits	\$23,051,000
Federal education and training assistance	\$5,048,000
Other payments to individuals	\$418,000
Total personal income	\$6,217,084,000
Dependency ratio	23.4%

## Federal Expenditures

Direct expenditures or obligations	\$1,331,482,779
Retirement and disability	\$662,003,394
Other direct payments	\$407,200,184
Grant awards	\$204,864,811
Highway planning and construction	\$12,647,664
Temporary assistance to needy families	\$14,434,533
Medical assistance program	\$115,233,533
Procurement contract awards	\$19,828,183
Dept. of Defense	\$11,212,366
Salary and wages	\$37,586,207
Dept. of Defense	\$3,923,000
Other federal assistance	\$126,082,074
Direct loans	\$6,852,228
Guaranteed loans	\$38,808,768
Insurance	\$80,421,078

## Per Capita Personal Income



**Civilian Labor Force**

	2003	2004	2005	2006	2007
Civilian labor force	106,600	106,400	105,300	105,900	105,300
Employed	98,600	98,400	98,200	99,400	98,600
Unemployed	8,000	8,000	7,100	6,500	6,700
Unemployment rate	7.5	7.5	6.7	6.2	6.3

**Establishments, Employment, and Wages by Sector: 2006**

Industrial Sector	Number of Establishments	Average Employment	Total Wages	Average Weekly Wage
Private Sector	4,495	73,969	\$2,884,866,492	\$750
Goods-Producing	812	23,188	\$1,542,075,836	\$1,278
Natural Resources and Mining	21	83	\$2,526,337	\$585
Constuction	506	2,825	\$98,575,900	\$671
Manufacturing	285	20,279	\$1,440,973,599	\$1,366
Service-Providing	3,683	50,781	\$1,342,790,656	\$508
Trade, Transportation and Utilities	1,097	16,656	\$444,392,334	\$513
Information	60	830	\$32,042,940	\$742
Financial Services	464	3,029	\$97,071,092	\$616
Professional and Business Services	613	6,811	\$188,067,010	\$531
Education and Health Services	554	13,297	\$461,690,430	\$667
Leisure and Hospitality	486	7,823	\$80,310,287	\$197
Other Services	400	2,316	\$38,847,965	\$322
Unclassified	10	19	\$368,598	\$373
Federal Government		476	\$23,904,463	\$965
State Government		905	\$38,992,455	\$828
Local Government		8,780	\$312,272,972	\$683

**Change Since 2001**

Private Sector	-1.2%	-6.1%	12.2%	19.6%
Goods-Producing	-6.2%	-22.0%	4.9%	34.5%
Natural Resources and Mining	-16.0%	-45.4%	-29.9%	28.3%
Construction	-5.4%	3.8%	20.0%	15.7%
Manufacturing	-6.9%	-24.5%	4.1%	37.8%
Service-Producing	0.0%	3.6%	21.9%	17.6%
Trade, Transportation and Utilities	-4.5%	-5.9%	8.6%	15.5%
Information	27.7%	20.6%	4.0%	-13.8%
Financial Services	6.2%	-2.1%	7.8%	10.2%
Professional and Business Services	5.1%	7.6%	18.5%	10.2%
Education and Health Services	5.1%	24.9%	59.0%	27.3%
Leisure and Hospitality	1.0%	1.0%	7.2%	5.9%
Other Services	-10.7%	-16.4%	-14.2%	2.5%
Federal Government		-6.7%	5.8%	13.4%
State Government		0.9%	11.1%	10.1%
Local Government		-11.4%	7.9%	21.7%

**Business Numbers**

	2003	2004	2005	2006	2007
Business starts	386	328	328	407	285
Active businesses	3,686	3,733	3,724	3,705	3,517

**Major Employers**

Delphi Corp	Mfg
Forum Health	Serv
General Motors Corp	Mfg
Giant Eagle Inc	Trade
HM Health Services	Serv
Sears Holdings/Kmart Corp	Trade
Trumbull County Government	Govt
Warren City Bd of Ed	Govt
West Corp	Serv
WCI Steel Inc	Mfg

**Residential**

**Construction**

	2003	2004	2005	2006	2007
Total units	480	520	449	304	320
Total valuation (000)	\$58,910	\$66,274	\$63,635	\$49,419	\$43,269
Total single-unit bldgs	392	376	350	242	152
Average cost per unit	\$132,157	\$147,011	\$158,531	\$176,978	\$182,095
Total multi-unit bldg units	88	144	99	62	168
Average cost per unit	\$80,729	\$76,377	\$82,310	\$106,290	\$92,798